

Solo Leveling

Art · DUBU(REDICE STUDIO)

Original Novel · Chugong

Story · h-goon

88





YOU HAVE FOUND [ITEM: DEMON MONARCH'S RING].

YOU HAVE FOUND [ITEM: DEMON KING'S LONGSWORD].

YOU HAVE FOUND TWO [ITEM: DEMON KING'S DAGGERS].

YOU HAVE FOUND TWO [ITEM: BARAN'S HORNS].

YOU HAVE FOUND [MATERIAL ITEM:
PURIFIED BLOOD OF THE DEMON KING].

THE DEMON
MONARCH'S
RING!

WITH THIS,
THE SET EFFECTS
WILL ACTIVATE.

SLIDE

ITEM

— X



[ITEM: DEMON MONARCH'S RING]
LEVEL OF DIFFICULTY: S
TYPE: ACCESSORY

SENSE +20, INTELLIGENCE +20

SET EFFECTS WILL BE ACTIVATED WHEN THIS ITEM
IS WORN WITH THE DEMON MONARCH'S EARRING
AND THE DEMON MONARCH'S NECKLACE.

SET EFFECT 1. ALL STATS +5
SET EFFECT 2. ALL STATS +10

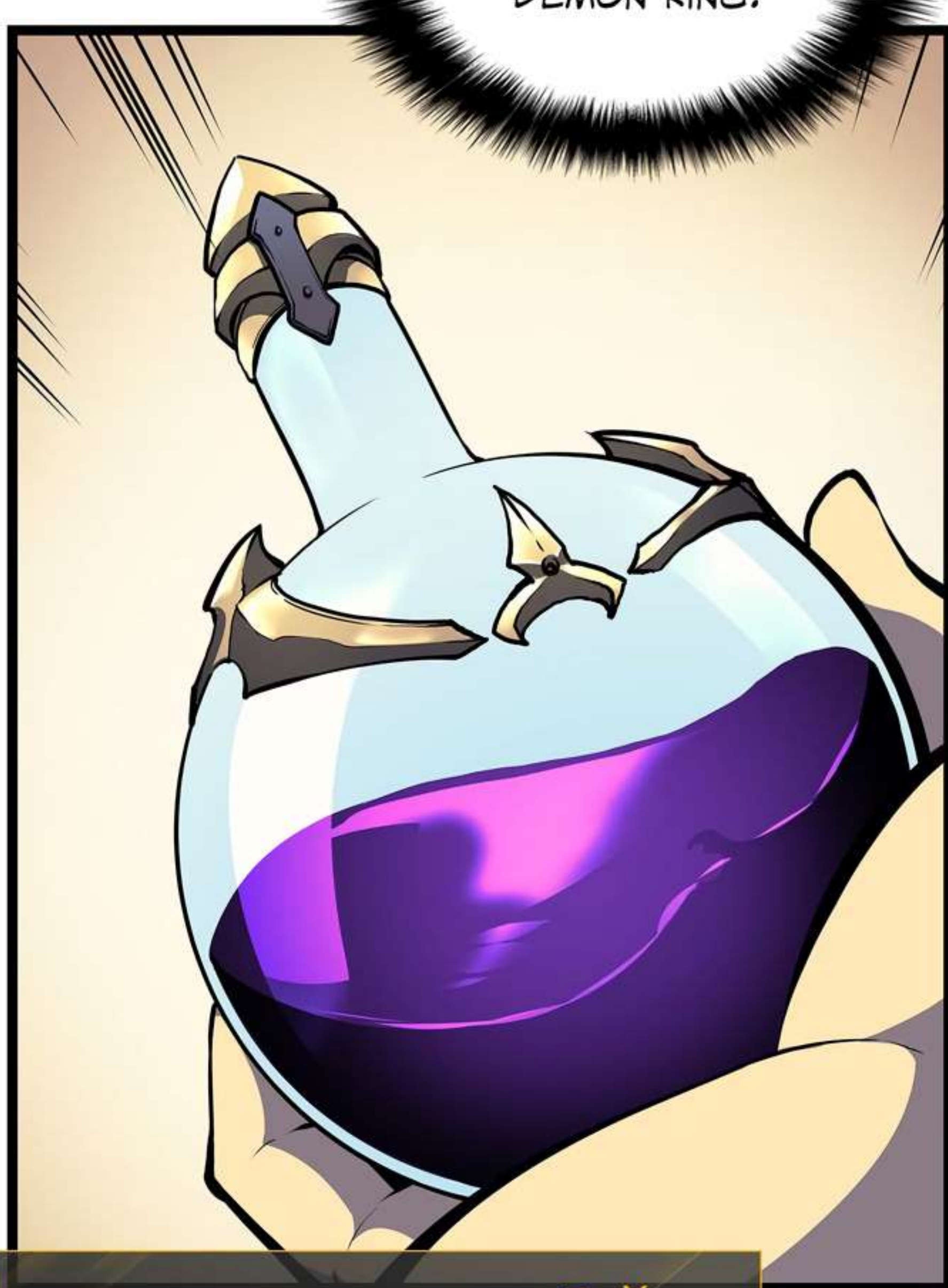


BUT THIS
ONE IS THE MOST
IMPORTANT ITEM.



YOU HAVE FOUND [MATERIAL ITEM:
PURIFIED BLOOD OF THE DEMON KING.]

PURIFIED
BLOOD OF THE
DEMON KING.



ITEM

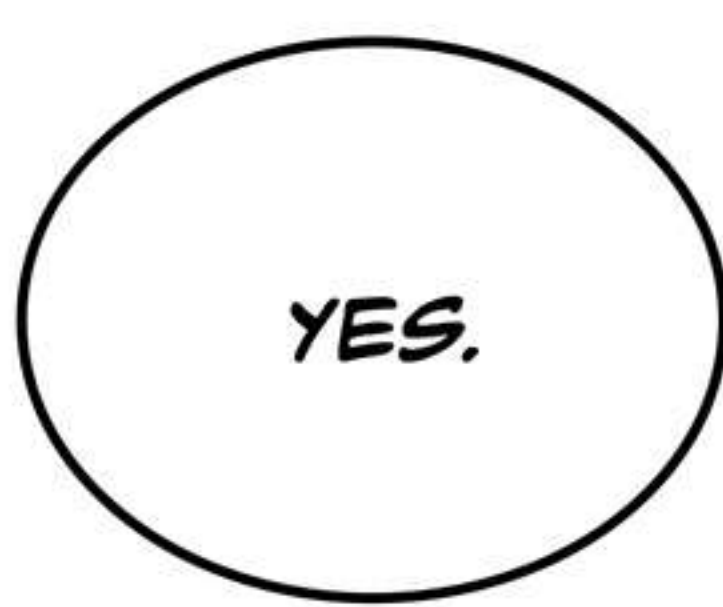
— X



[MATERIAL ITEM: PURIFIED BLOOD
OF THE DEMON KING]
LEVEL OF DIFFICULTY: ??
TYPE: MATERIAL

THIS LIQUID IS MADE FROM THE PURIFIED BLOOD
OF BARAN, THE DEMON KING, AND CONTAINS
POWERFUL MAGIC.

ALTHOUGH IT HAS BEEN PURIFIED, POISONOUS
SUBSTANCES STILL REMAIN. IN ORDER TO USE THIS
ITEM AS A POTION, YOU MUST USE "THE FRAGMENT OF
THE WORLD TREE" AND "THE SPRING WATER FROM
THE FOREST OF ECHOES" TO NEUTRALIZE THE POISON.



[10]

[9]

THE PROBABILITY
OF SUCCESS AND THE
NUMBER OF ITEMS
CRAFTED DEPEND ON
MY INTELLIGENCE
STAT POINTS?

IF I'D
KNOWN ABOUT THIS,
I WOULD'VE FOCUSED
ON INCREASING MY
INTELLIGENCE
STAT...

ARE YOU TALKING
ABOUT THE LEVEL OF
SKILL NEEDED TO
CRAFT THE ITEM? YOU
SHOULDN'T HAVE
AN ISSUE.

[8]

[7]

[6]

[5]

[4]

[3]

[2]

[1]

[THE ITEM WAS SUCCESSFULLY CRAFTED!]

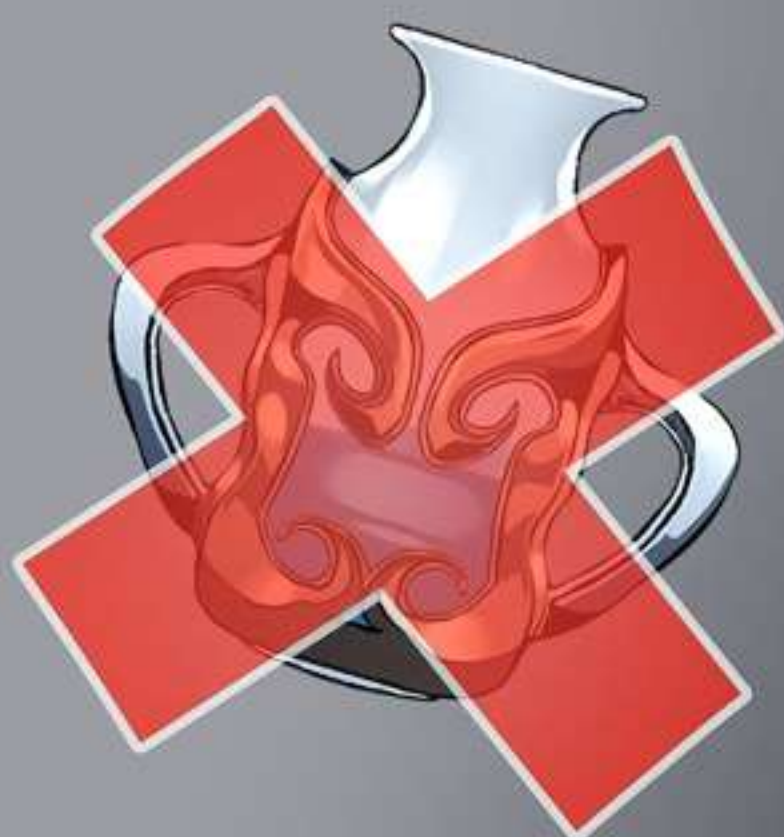


YOU HAVE OBTAINED SIX [ITEM: HOLY WATER OF LIFE]!

YES!

HUH?

SOME OF
THE DEMON KING'S
BLOOD WAS USED UP AND
A BIT OF THE WORLD TREE
FRAGMENT WAS CHIPPED
AWAY AT, BUT THE SPRING
WATER FROM THE FOREST
OF ECHOES IS GONE.



[MATERIALS]

PURIFIED BLOOD OF THE DEMON KING (1/1)
FRAGMENT OF THE WORLD TREE (1/1)
SPRING WATER FROM THE FOREST
OF ECHOES (0/1)

DOES THAT
MEAN NOT ALL OF THE
MATERIALS ARE USED
TO CRAFT AN ITEM?
I GUESS ONLY THE
NEEDED AMOUNT
IS USED.

SO THIS IS THE
HOLY WATER OF
LIFE...



ITEM

- X

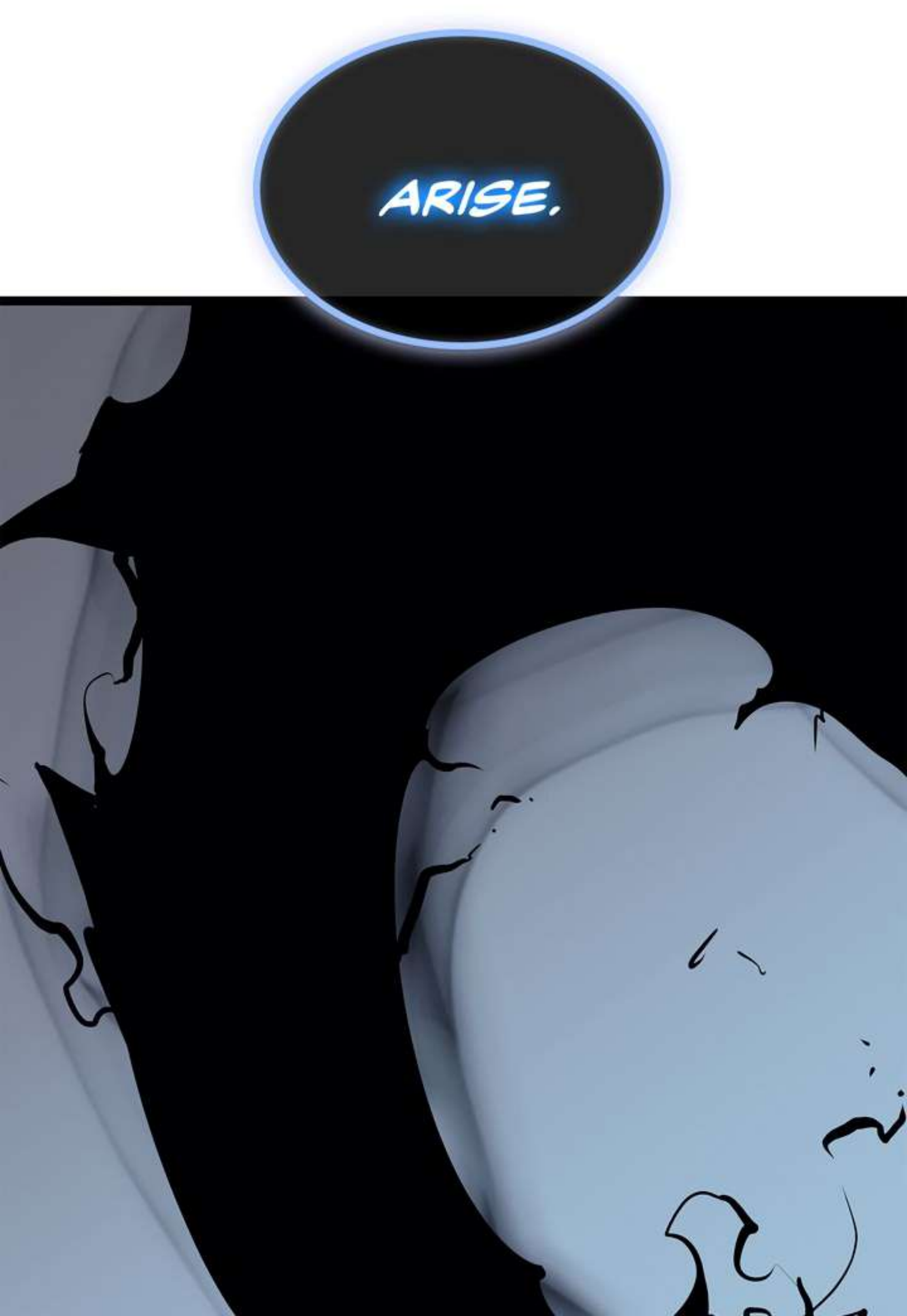
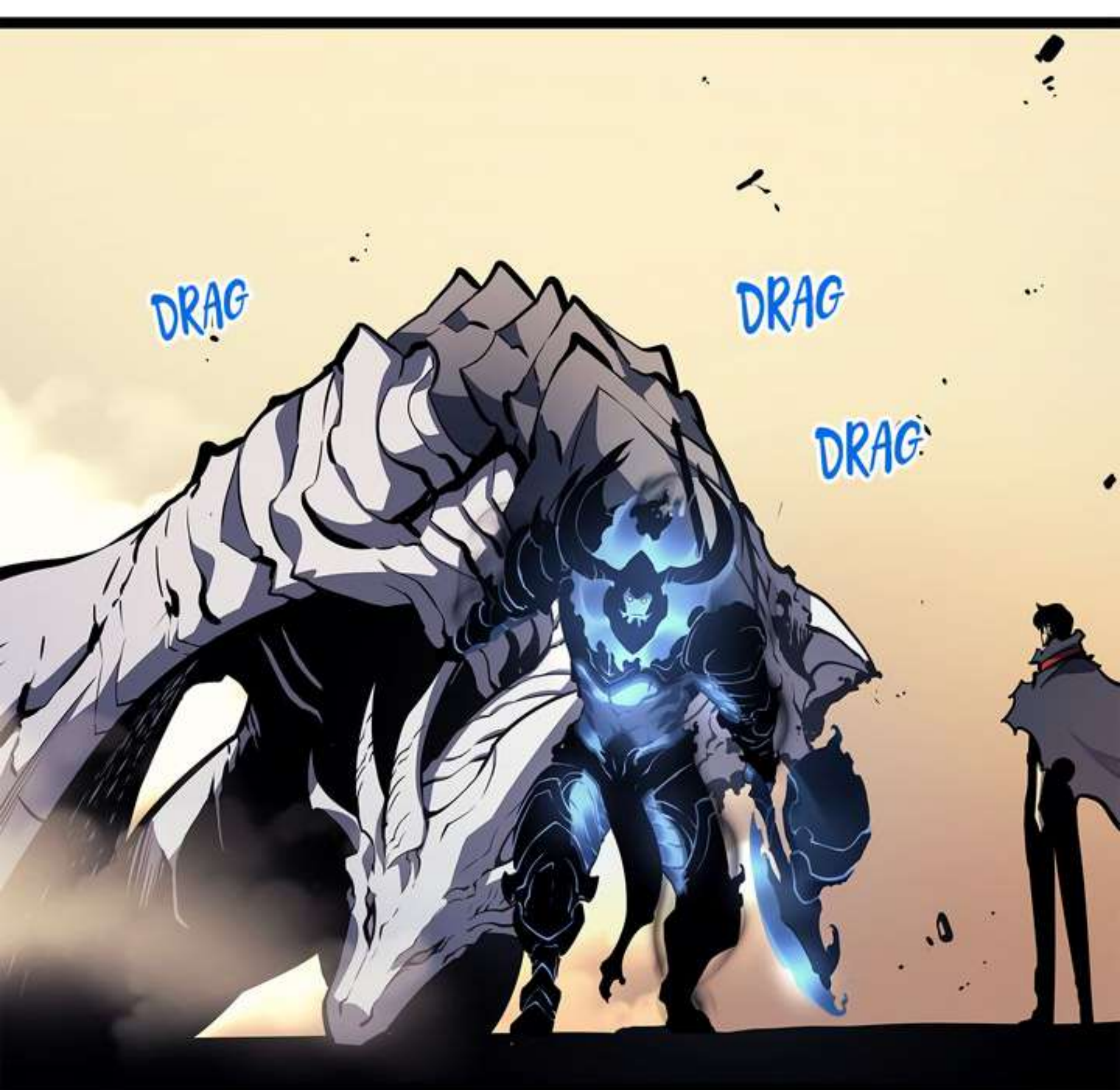


[HOLY WATER OF LIFE]
LEVEL OF DIFFICULTY: S
TYPE: CONSUMABLE

A MYSTERIOUS POTION THAT USES
POWERFUL MAGIC TO CURE THE USER OF
ALL ILLNESSES. THE ENTIRE BOTTLE
MUST BE CONSUMED IN ORDER FOR THE
POTION TO TAKE FULL EFFECT.

WILL THIS ITEM
BE ABLE TO CURE
MY MOTHER'S
ILLNESS?

I WANT TO GO
AND FIND OUT
RIGHT NOW!




FSHHHH





JINWOO, SIR.
THAT'S...!



I CAN'T TURN
DEMONS INTO SHADOW
SOLDIERS, BUT IT SEEMS
LIKE THE WYVERN IS
AN EXCEPTION.

[PLEASE CHOOSE A NAME
FOR YOUR SOLDIER.]



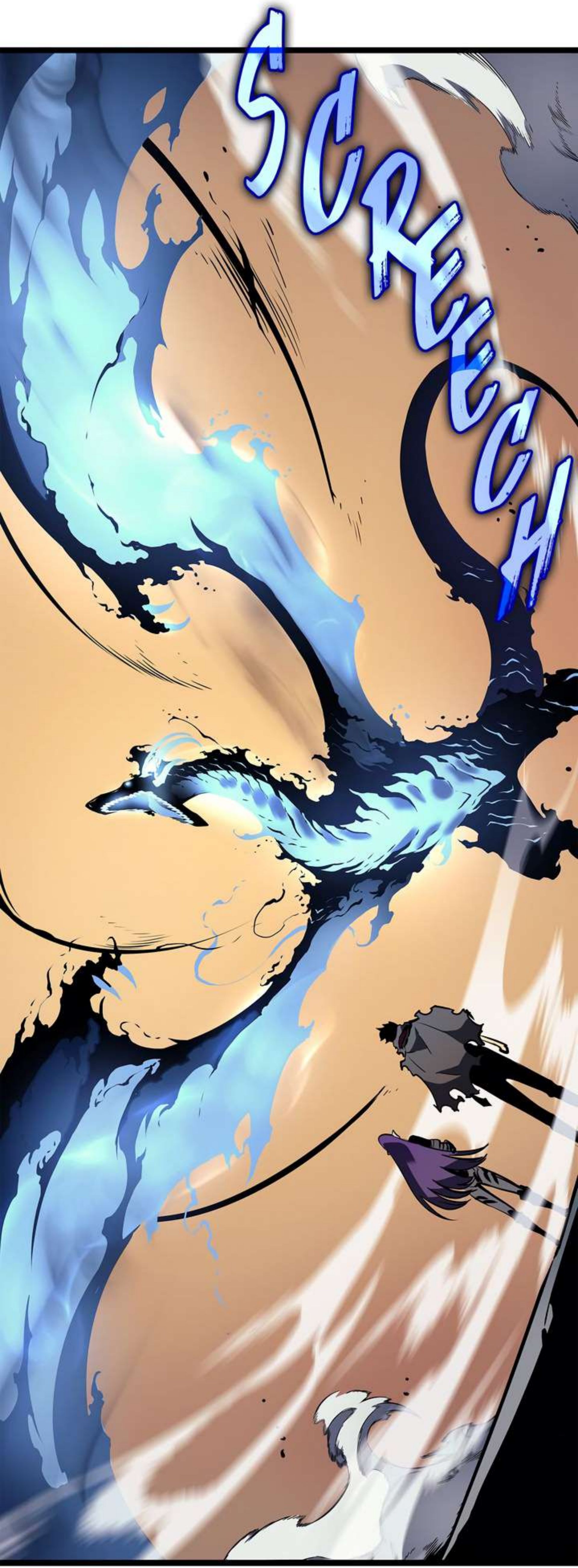
WYVERN
KAISELLIAN...?
KALLEKALLIN?

WHAT WAS
YOUR NAME
AGAIN?



JINWOO, SIR. YOU'RE
PRETTY BAD WITH
NAMES...

KAISEL.



IF WE
RIDE THAT THING,
WE'LL BE ABLE TO
GET BACK TO MY
CLAN IN NO TIME!

DO I HAVE
TO GO DOWN EACH
FLOOR IN ORDER TO
EXIT THE DEMONS'
CASTLE?

SWISH

I WANT TO
LEAVE THIS PLACE
AS QUICKLY AS
POSSIBLE...

MY CLAN
WILL HOLD A
BANQUET ONCE
WE RETURN!

MY FATHER
WILL BE VERY
PLEASED!

AH, I HAVEN'T
RECEIVED MY QUEST
REWARDS YET.

[REGULAR QUEST: COLLECT THE DEMONS'
SOULS! (2)] HAS BEEN COMPLETED.

REWARD 1. TOP-TIER RUNE STONE
REWARD 2. BONUS STATS +30
REWARD 3. UNDISCLOSED REWARD

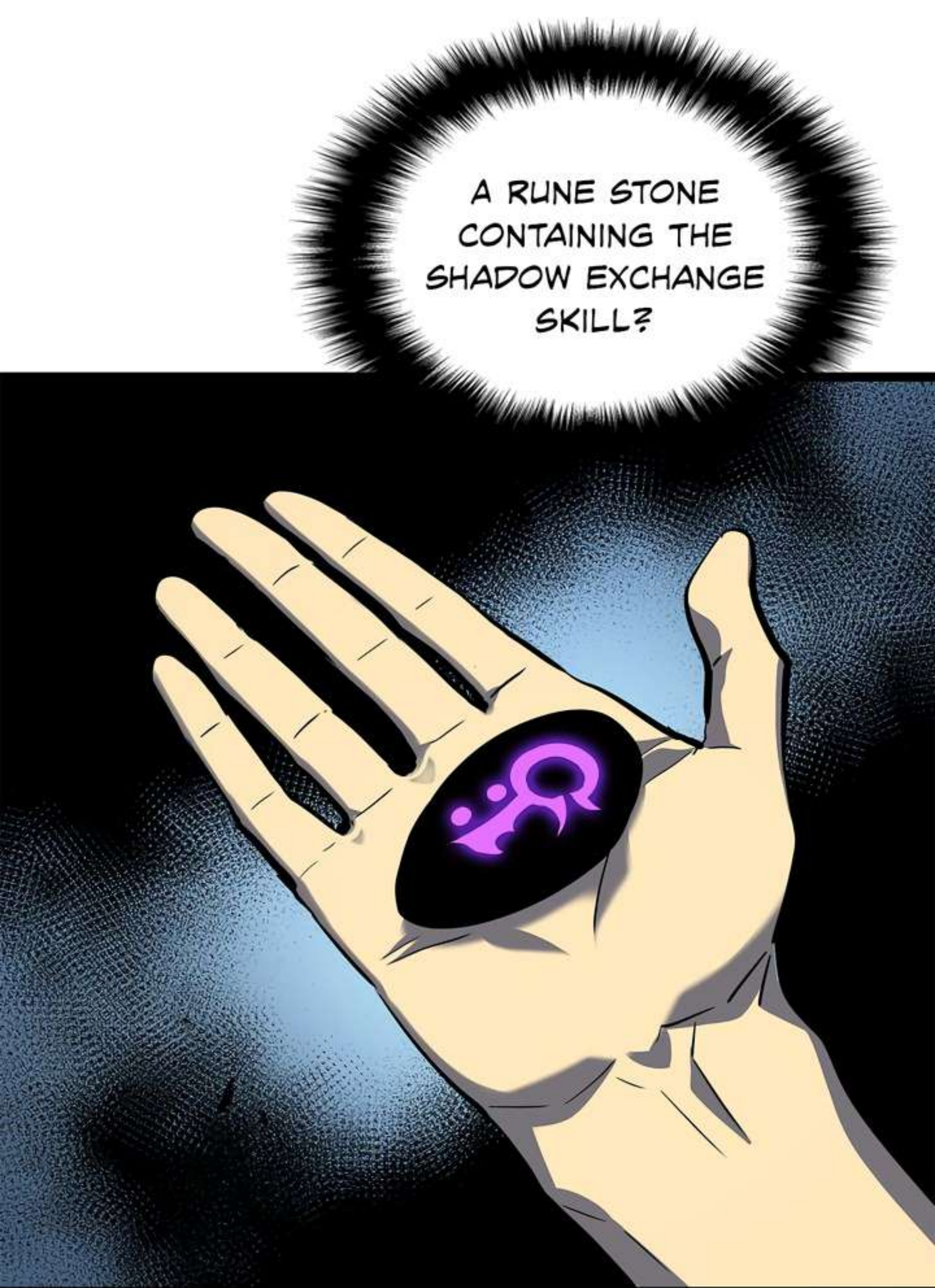
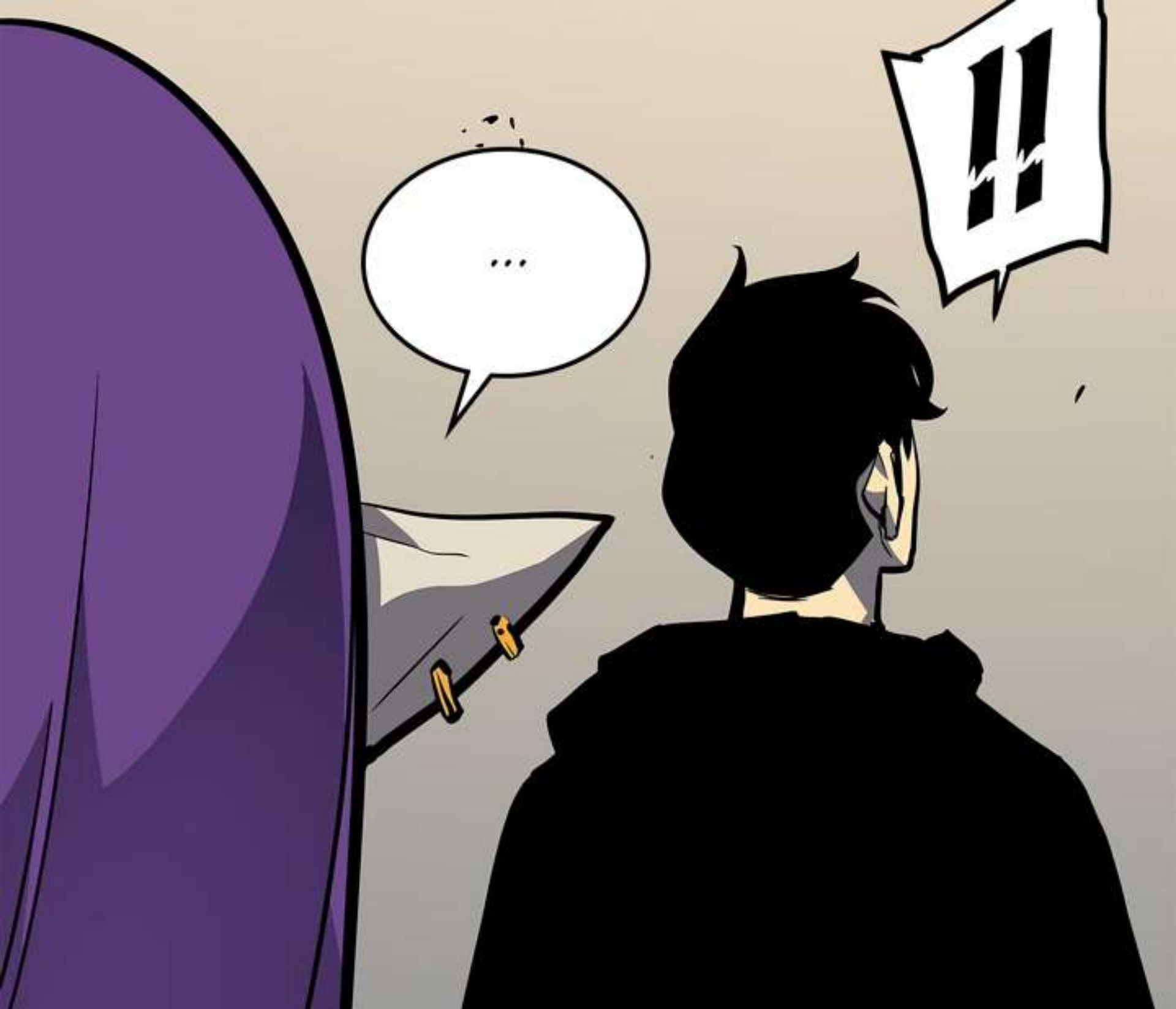


[YOU HAVE RECEIVED A TOP-TIER RUNE STONE
CONTAINING THE "SHADOW EXCHANGE" SKILL.]

[YOU HAVE RECEIVED "BONUS STATS +30."]

[YOU HAVE RECEIVED THE TITLE: "DEMON SLAYER."]

YOU HAVE NOT MET ALL OF THE REQUIREMENTS
FOR THE [TITLE: DEMON SLAYER.]



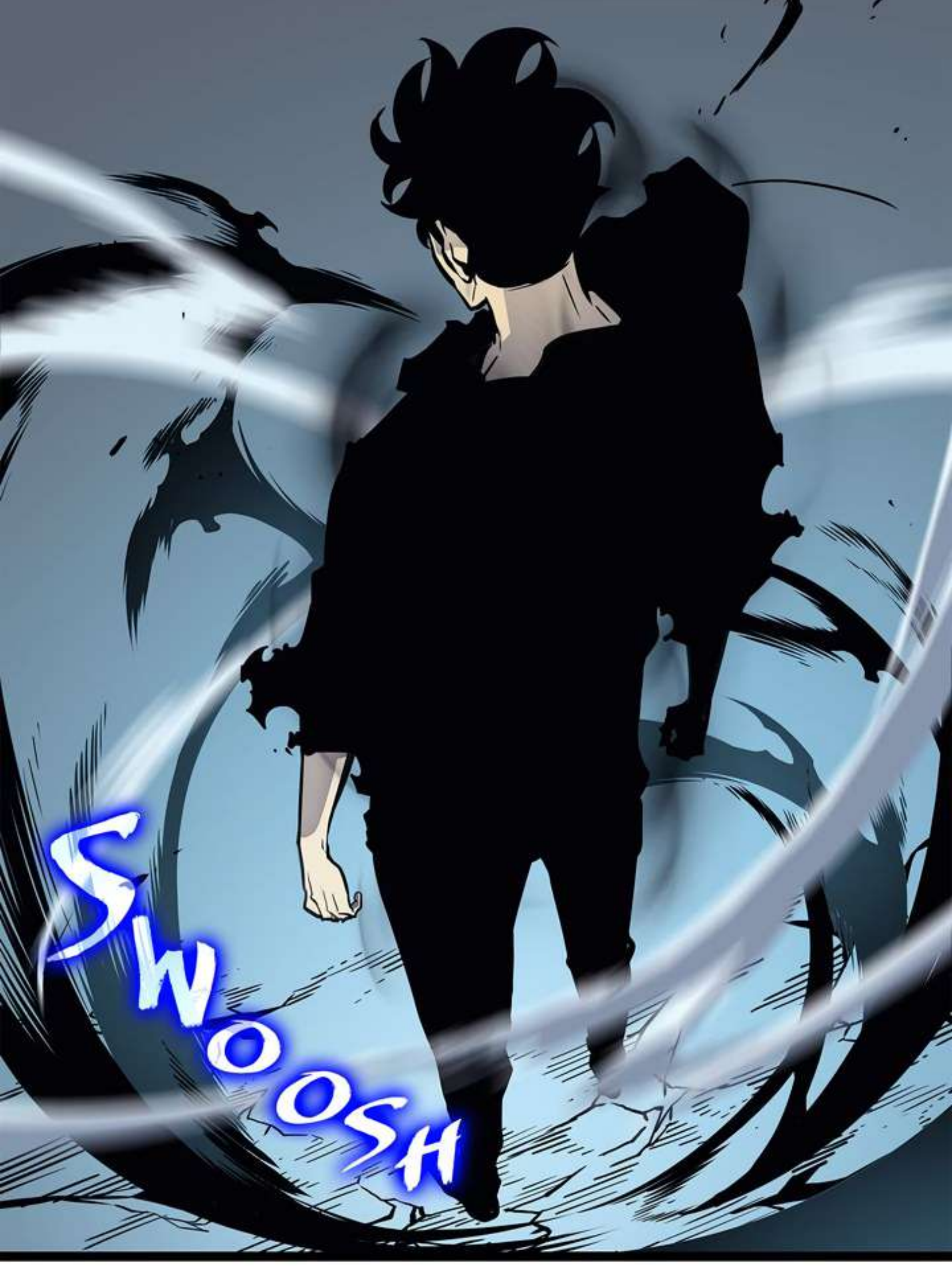
SKILL

- X



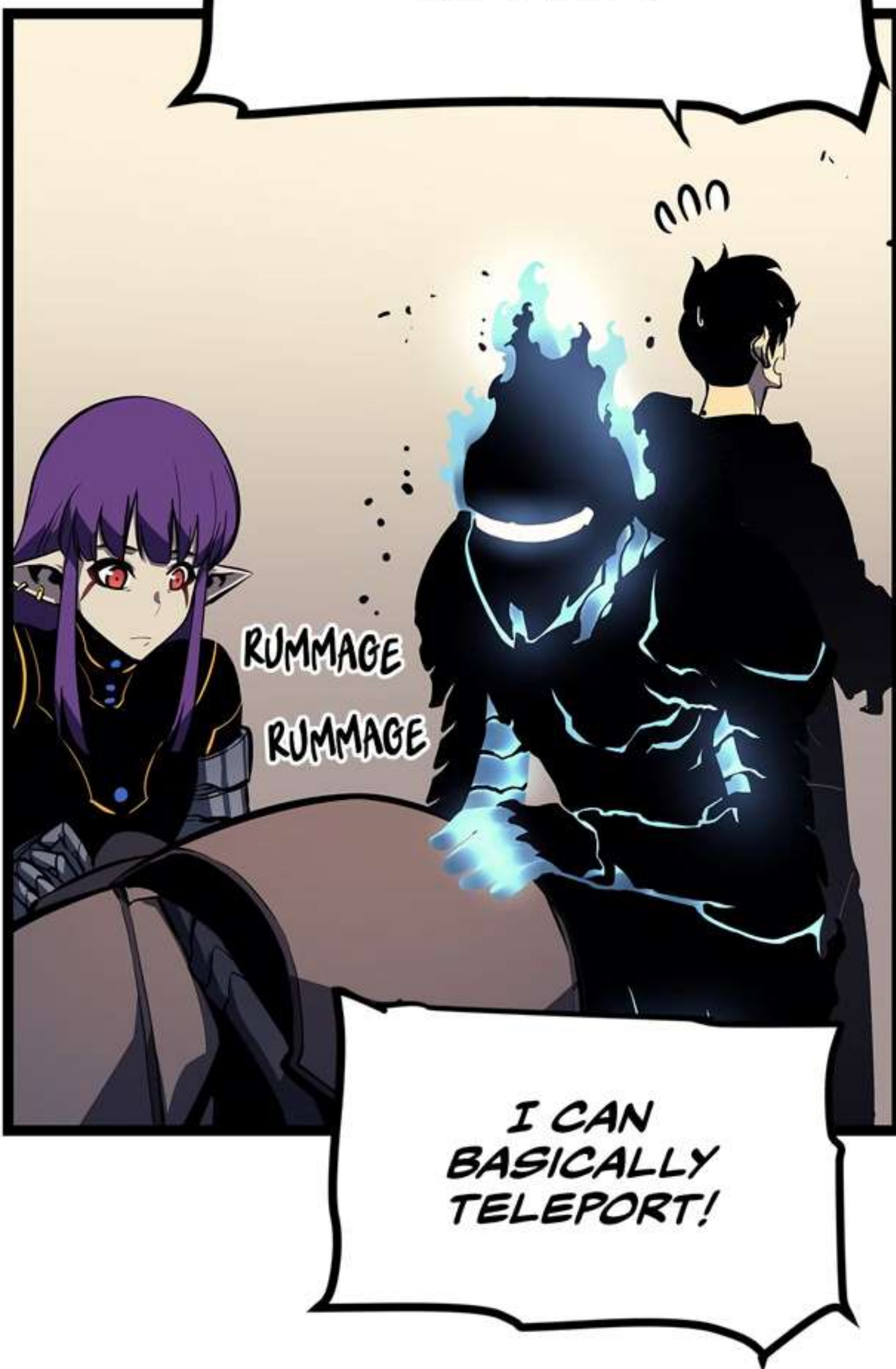
SHADOW EXCHANGE LV.1
JOB-SPECIFIC SKILL.
NO MANA REQUIRED.

THE CASTER OF THIS SKILL MAY SWAP PLACES WITH A SELECTED SHADOW SOLDIER. ONCE USED, IT MAY NOT BE USED AGAIN UNTIL A THREE-HOUR COOLDOWN PERIOD HAS PASSED. THE COOLDOWN PERIOD WILL CHANGE BASED ON THE LEVEL OF THE SKILL.



**THIS IS
AWESOME!**

**I CAN
SWAP PLACES WITH
A SHADOW SOLDIER
NO MATTER WHERE
THEY ARE!**



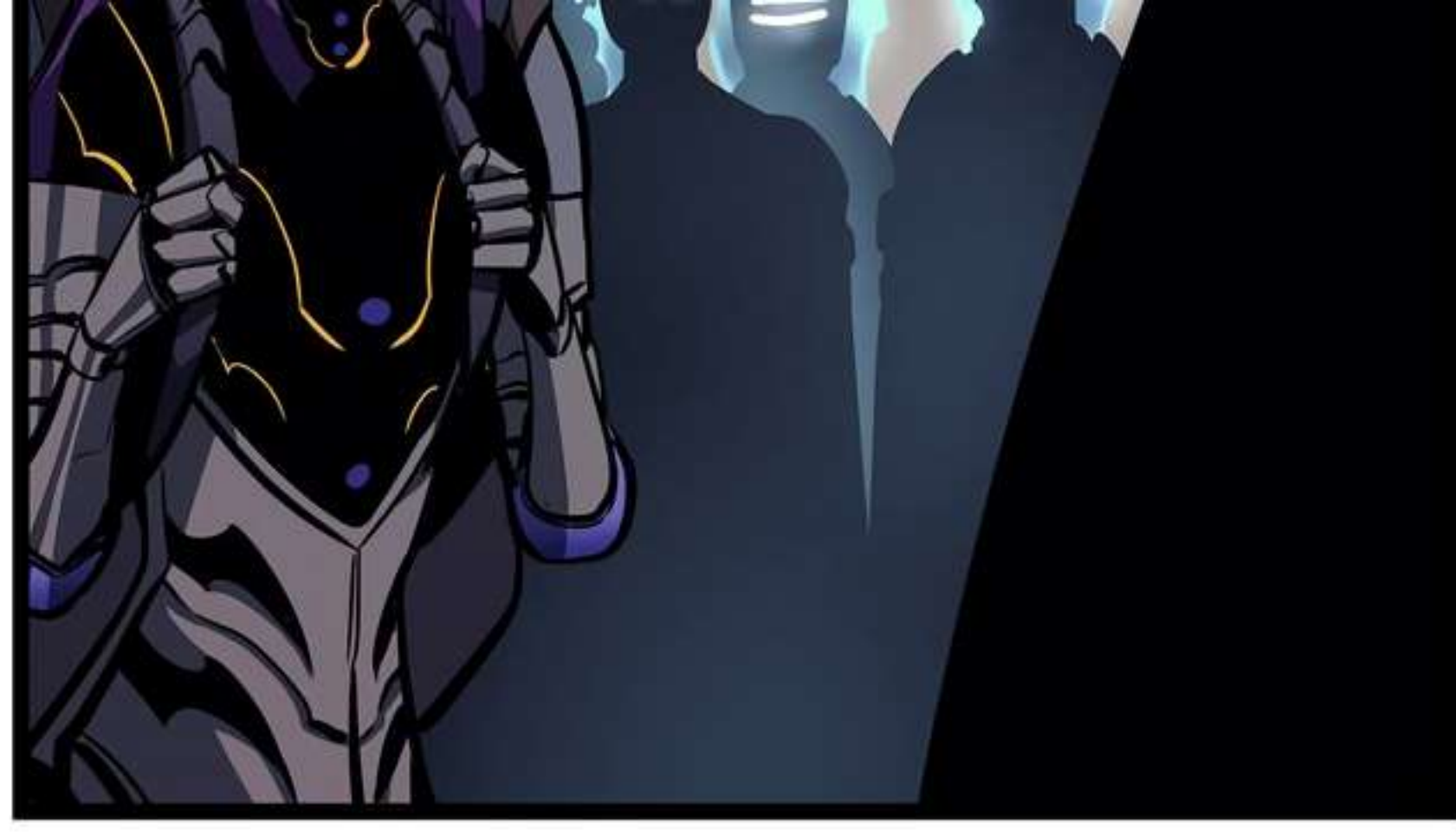
**I CAN
BASICALLY
TELEPORT!**

**GOOD WORK,
EVERYONE.**

**ESIL, I'M
SORRY, BUT YOU'LL
HAVE TO RETURN
WITHOUT ME.**

**HUH?
WHAT ABOUT THE
BANQUET...?**





THE
RADISH CLAN IS
ON THE 80TH
FLOOR.



IT'S TOO FAR
AWAY.

I'LL SEE YOU
AROUND.



GOODBYE.

[SKILL: "SHADOW EXCHANGE"
HAS BEEN ACTIVATED.]



JINWOO, SIR!
I'M....!

[YOU HAVE DEFEATED THE BOSS.
THE DUNGEON WILL NOW BE RESTORED
TO ITS ORIGINAL...]

HUH?

? ?

HAA...

? ?
??
??
??
??





[SHADOW
EXCHANGE LV.1]

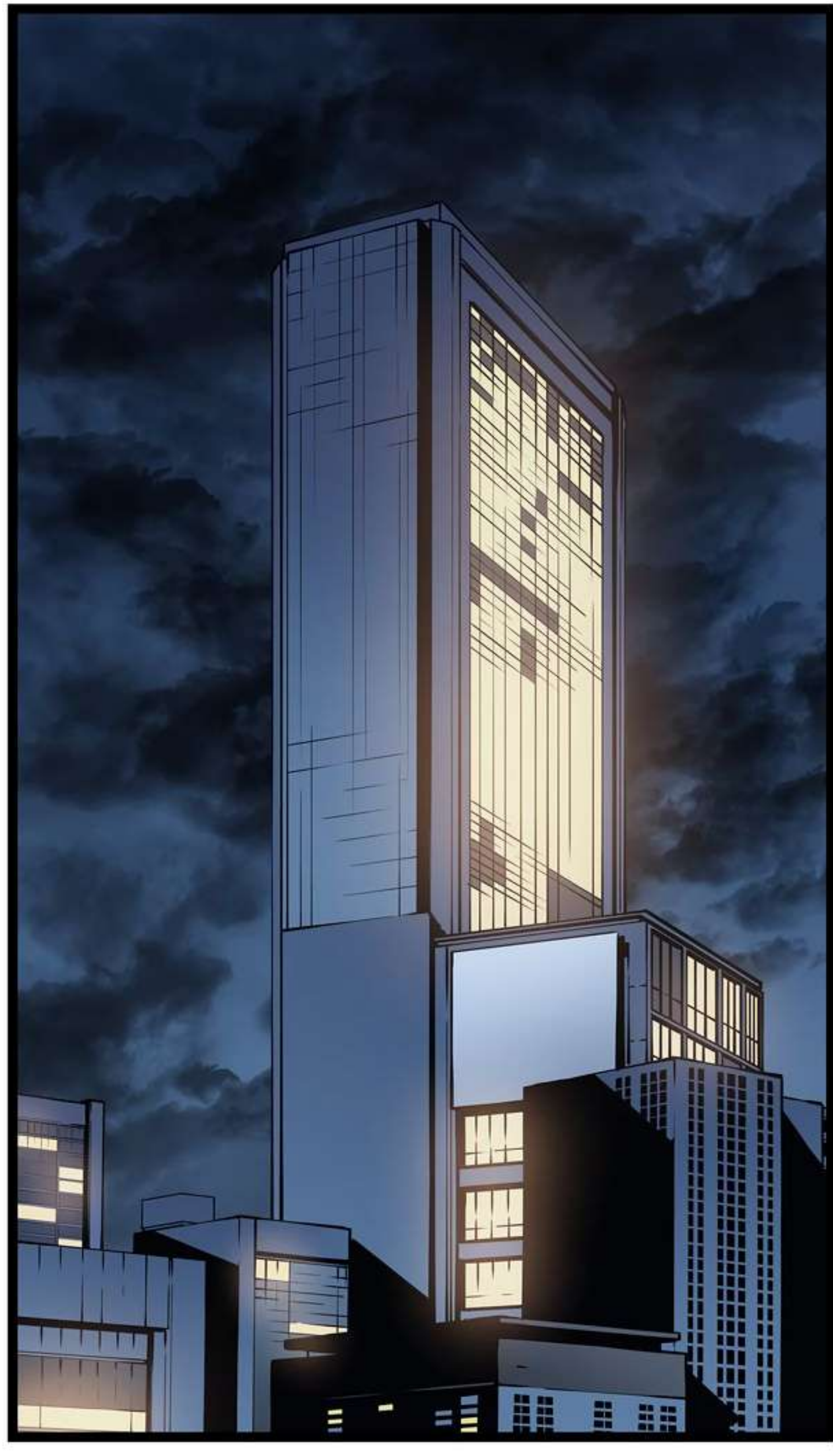
[...THIS SKILL MAY BE USED
AGAIN IN 2 HOURS, 59 MINUTES,
AND 57 SECONDS.]

KAISEL.

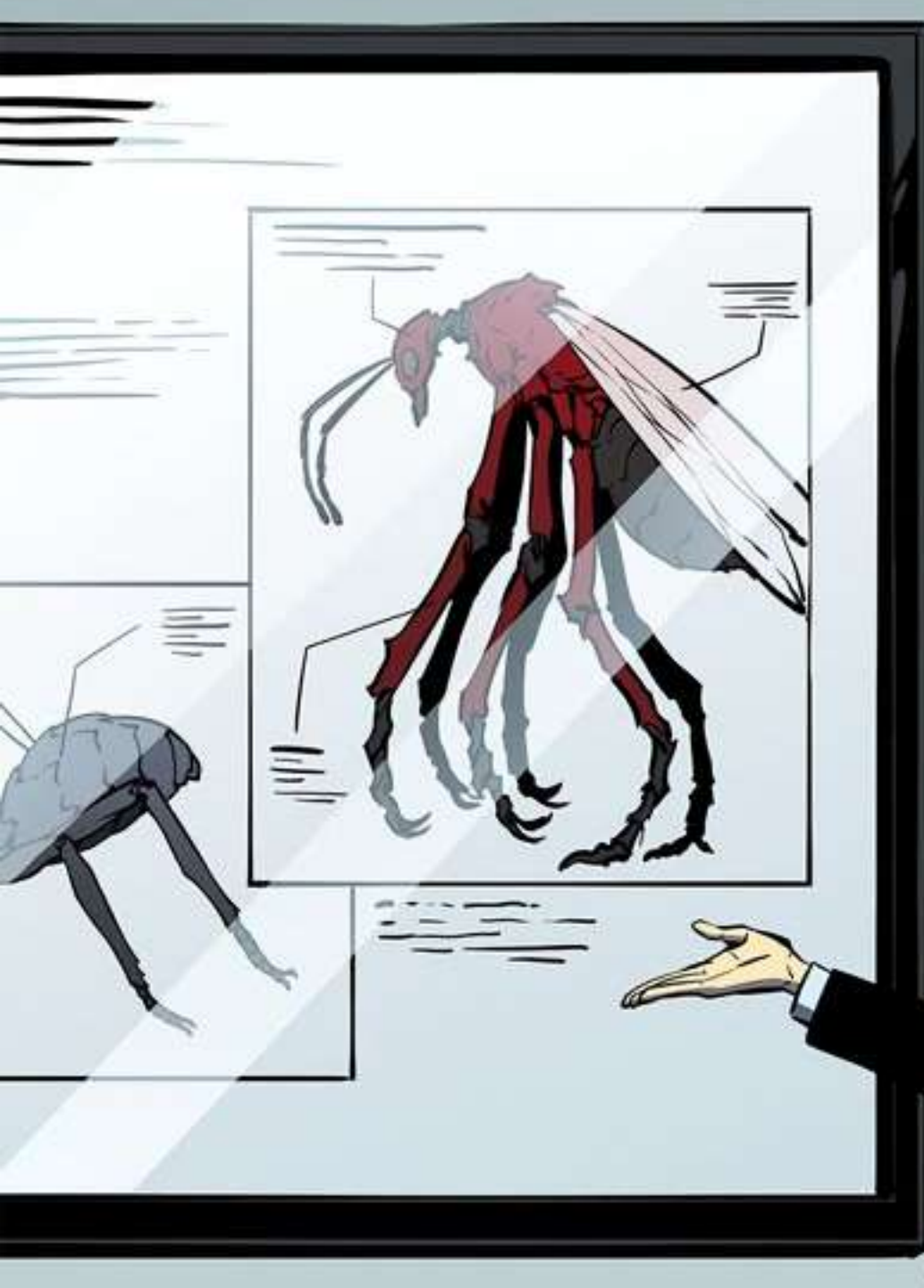
JUMP

SWOOSH





THIS VIDEO WAS
SENT OVER FROM
JAPAN.



IT WAS TAKEN BY
A SATELLITE CAMERA
THAT CAN DETECT
MANA.

DOCUMENTATION
OF THE FIRST, SECOND,
AND THIRD SEARCH AND
DESTROY MISSIONS,
HUH...?

JUST AS GOTO RYUJI
ASSURED US, IT LOOKS
LIKE ALL OF THE ANTS CAME
CRAWLING OUT OF THEIR
TUNNELS, LEAVING BEHIND
THE QUEEN AND HER
GUARDS.

THE FACT THAT THE
ANTS ARE CHANGING IN
APPEARANCE MUST BE
PROOF THAT THEY'RE
EVOLVING WITH EACH
NEW GENERATION.



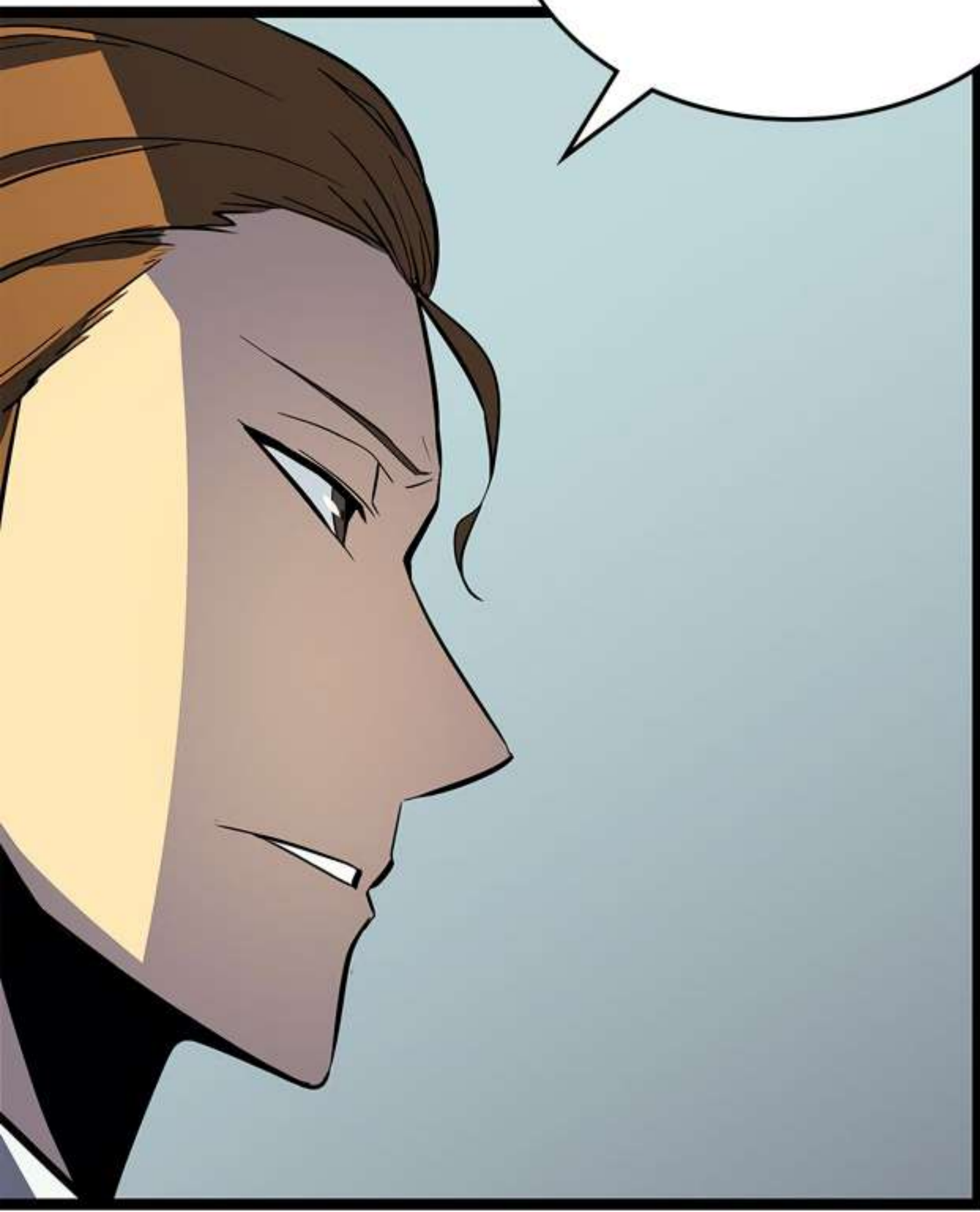
EACH
GENERATION PROBABLY
LASTS A YEAR... SINCE
THAT'S HOW LONG THEIR
LIFESPAN IS.

I'M WORRIED ABOUT THE
ANTS GUARDING THE QUEEN,
BUT THERE ARE ALWAYS A
FEW BEASTS GUARDING THE
BOSS IN ANY HIGH-RANKING
DUNGEON.



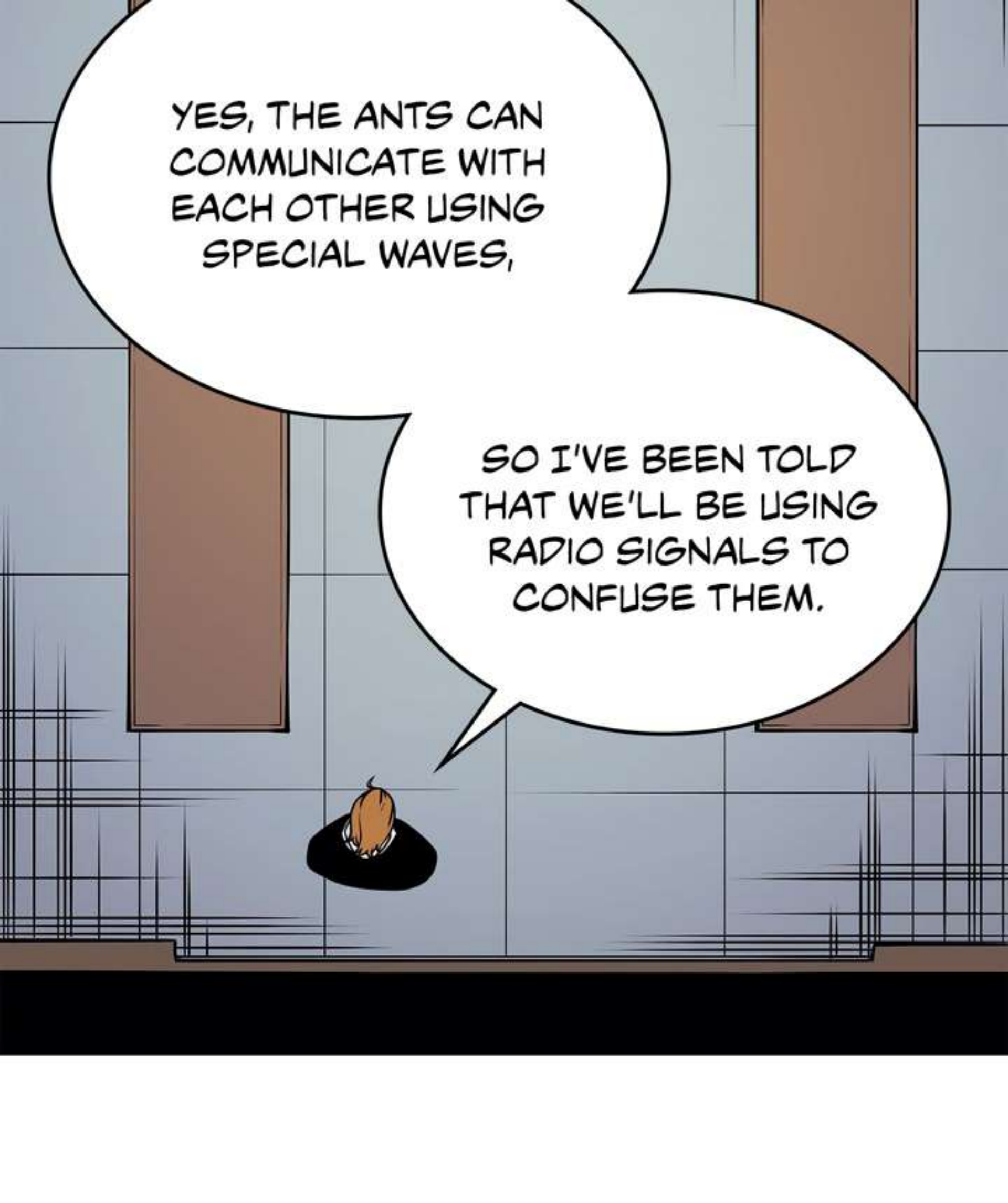
ONCE THE ANTS LEARN
THEIR QUEEN IS IN DANGER,
WHAT ARE THE CHANCES OF
THEM RETURNING TO THE
TUNNELS BEFORE WE GET
THE JOB DONE?

WE'LL
BE SENDING
OUT JAMMING
SIGNALS.



JAMMING
SIGNALS?





YES, THE ANTS CAN
COMMUNICATE WITH
EACH OTHER USING
SPECIAL WAVES,

SO I'VE BEEN TOLD
THAT WE'LL BE USING
RADIO SIGNALS TO
CONFUSE THEM.

SO ALL WE HAVE TO
WORRY ABOUT IS THE
QUEEN AND HER
GUARDS...?



WHAT'S WRONG,
MR. GO?

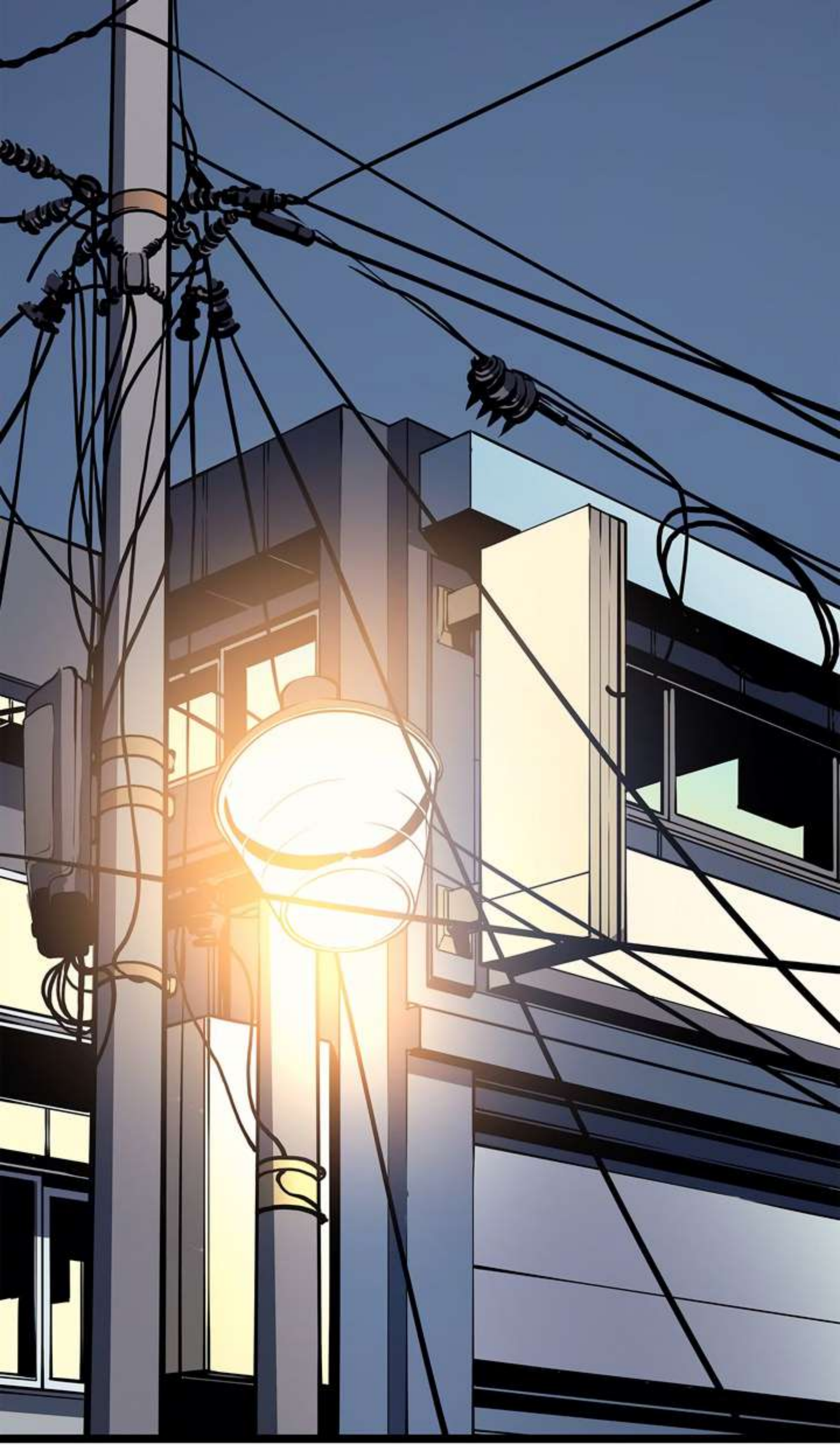
JUST NOW...
YOU DIDN'T FEEL
THAT?

I COULD FEEL
THE MANA WAVES,
THOUGH THEY WERE
COMING FROM A
GREAT DISTANCE.

WHAT'S
HAPPENING?

HAVE
YOU BEEN ABLE TO
GET IN TOUCH WITH
SUNG JINWOO?

I'M TRYING
MY VERY BEST,
SIR.



DID YOU FEEL
THAT, TOO?



YEP, JUST
BECAUSE I'M
RETIRED DOESN'T
MEAN I'VE LOST
MY TOUCH.

WHAT WAS THAT
JUST NOW?



CHOI JONG-IN
AND CHA HAE-IN ARE
PROBABLY DUKING IT OUT
OVER THEIR SHARES
IN THE GUILD OR
SOMETHING



HMM...

HERE,
HAVE ANOTHER
GLASS.

GLUG

GLUG

OOH,
ALL RIGHT, YOUR
HIGHNESS! HOW
THOUGHTFUL
OF YOU.

COME
ON. TURN THAT
FROWN UPSIDE
DOWN, BRO.

YOU'LL GET
WRINKLES FROM
SCOWLING LIKE
THAT ALL THE
TIME.

**SOJU
BEER**

S-RANK HEALER
MIN BYUNG-GU

ITEM

— X



[NAME: DEMON KING'S DAGGER]
LEVEL OF DIFFICULTY: S
TYPE: DAGGER

ATTACK +220

A DAGGER OBTAINED FROM BARAN, THE DEMON KING. A SET EFFECT WILL BE ACTIVATED WHEN TWO "DEMON KING'S DAGGERS" ARE USED AT ONCE.

SET EFFECT "TWO AS ONE": EACH DAGGER WILL RECEIVE BONUS ATTACK DAMAGE BASED ON THE CASTER'S STRENGTH STAT POINTS.

ITEM

— X



[NAME: DEMON KING'S LONGSWORD]
LEVEL OF DIFFICULTY: S
TYPE: LONGSWORD

ATTACK +350

A LONGSWORD CONTAINING THE POWERS OF BARAN, THE DEMON KING. THE EFFECT "STORM OF WHITE FLAMES" WILL ACTIVATE EVERY TIME THIS SWORD IS SWUNG.

EFFECT "STORM OF WHITE FLAMES": A VIOLENT THUNDERSTORM IS SUMMONED WITHIN A SPECIFIED AREA.

ITEM

— X



[NAME: DEMON MONARCH'S RING]
LEVEL OF DIFFICULTY: S
TYPE: ACCESSORY

SENSE +20, INTELLIGENCE +20

SET EFFECTS WILL BE ACTIVATED WHEN THIS ITEM IS WORN WITH THE DEMON MONARCH'S EARRING AND THE DEMON MONARCH'S NECKLACE.

SET EFFECT 1. ALL STATS +5
SET EFFECT 2. ALL STATS +10

To Be Continued...

Solo Leveling

D&C
WEBTOON

REDICE
STUDIO

Translator: JJoelle
Editor: Michelle Kim